



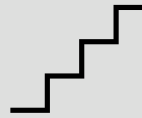
**1654**  
sqft



**4**  
beds



**2**  
baths



**1**  
story



**3**  
car garage



**68' x 59'**  
footprint

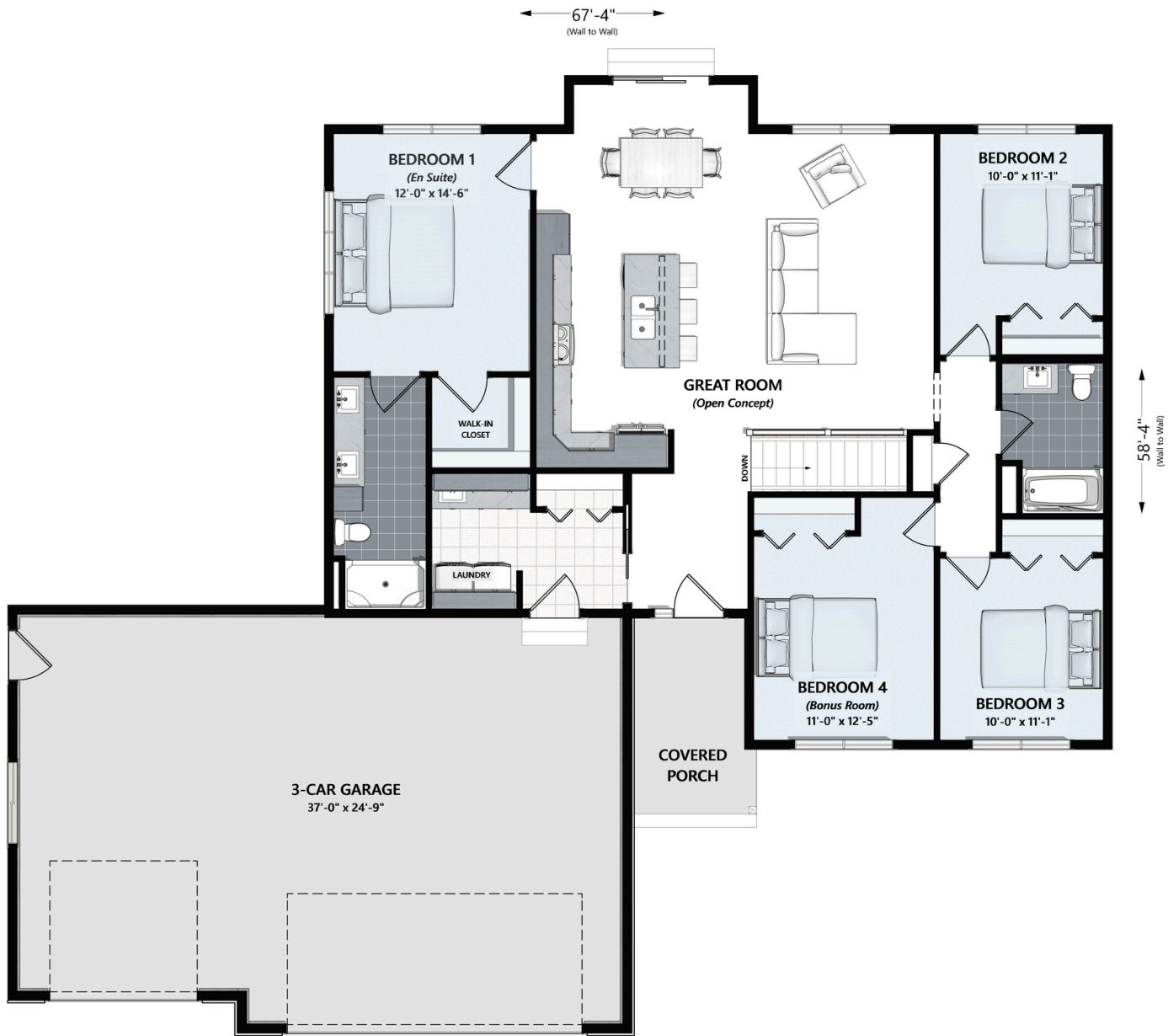


## MAIN LEVEL

1654 Sq. Ft. of Living Area

945 Sq. Ft. of Garage

- 3-4 Bed/2 Bath
- Flex Room/4<sup>th</sup> Bdrm
- Laundry Room
- Owner's Suite
- Sliding Door to Backyard
- 3 Car Garage
- Open Floor Plan
- Split Bedroom Layout





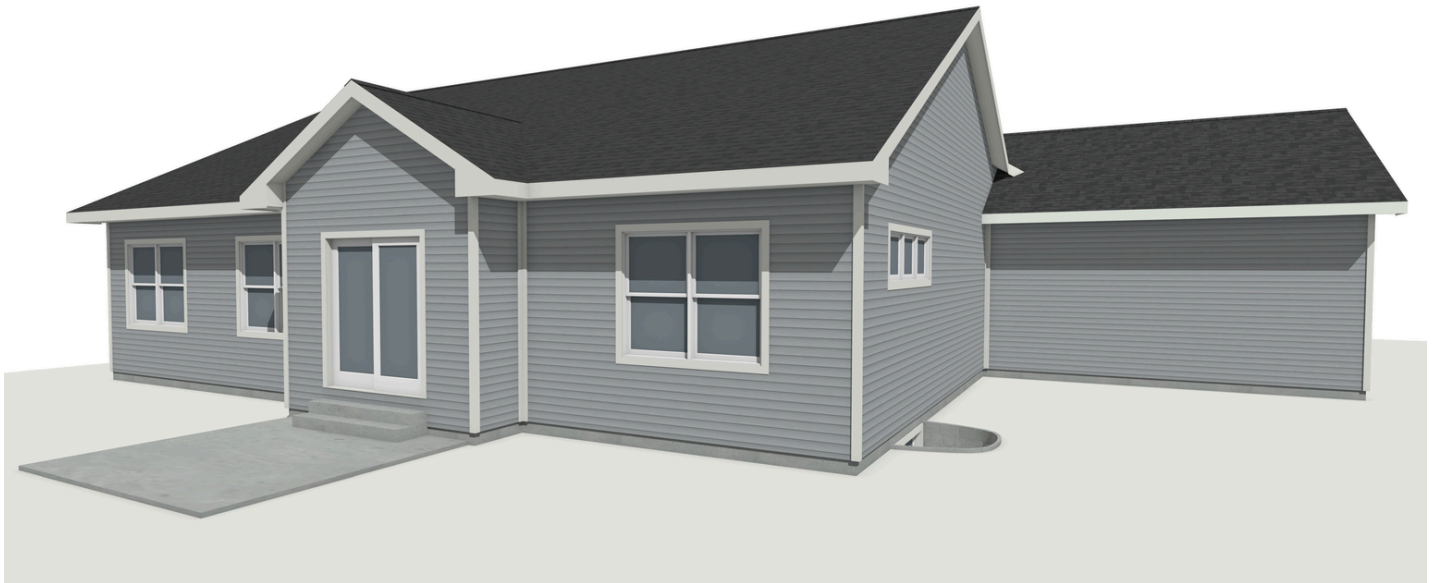
LIVING/GREAT ROOM



KITCHEN/DINING

# EXTERIOR RENDERINGS

STANDARD/BASE FLOOR PLAN



Perspectives shown with default colors and materials. Reference WH Homeowner Selection Guide for full selection of finish materials and colors available through Wausau Homes.

## \*DESIGN OPTIONS

2-Car Garage: 609 Sq. Ft.

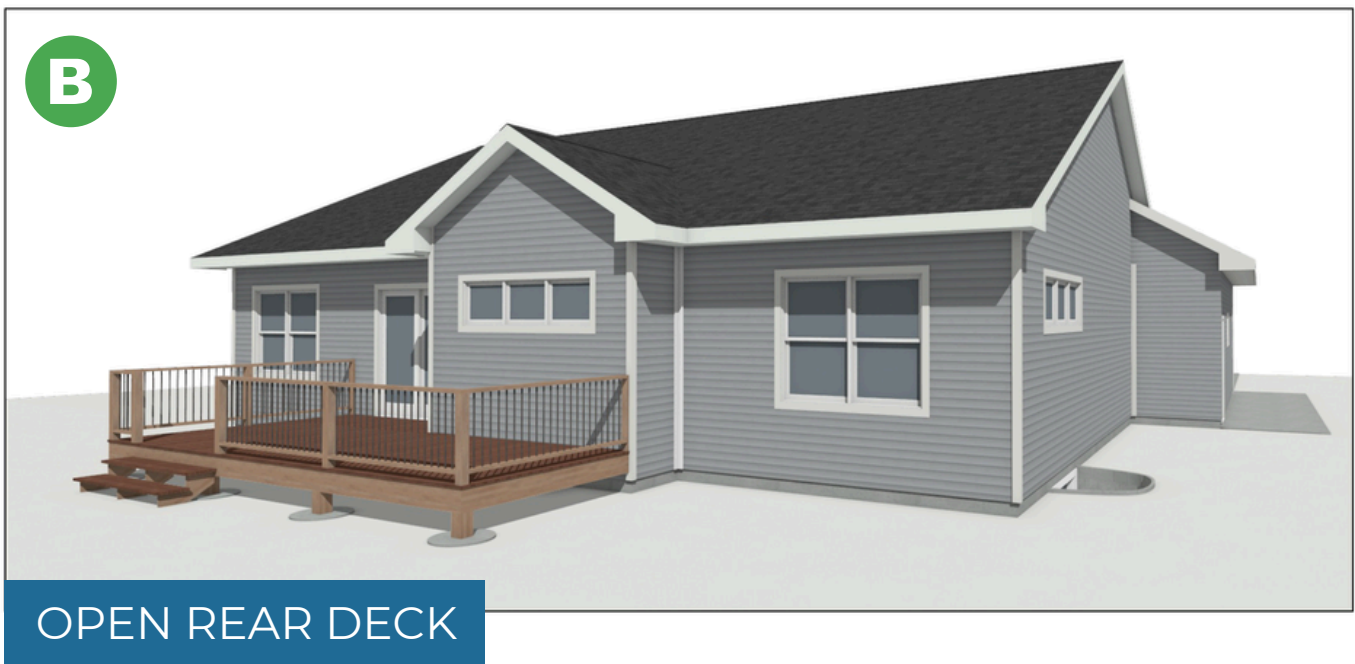
- A:** 2-Car Garage (Remove 3<sup>rd</sup> Stall)
- B:** Open Rear Deck
- C:** Built-in Dining Nook
- D:** Fireplace + Built-In Cabinetry/Shelving
- E:** Office/Bonus Room



\*Design Options can be added as optional upgrades, and are not included in the base plan. Contact your Wausau Homes builder for specifications and visuals.

# EXTERIOR DESIGN OPTIONS\*

\*ALTERNATE DESIGN OPTIONS - NOT INCLUDED



# INTERIOR DESIGN OPTIONS\*

\*ALTERNATE DESIGN OPTIONS - NOT INCLUDED



**BUILT-IN DINING NOOK**



**FIREPLACE + BUILT-IN CABINETRY/SHELVING**