



FELDSPAR

FLOOR PLAN
#WN310



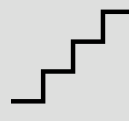
2368
sqft



3
beds



2.5
baths



2
story



3
car garage



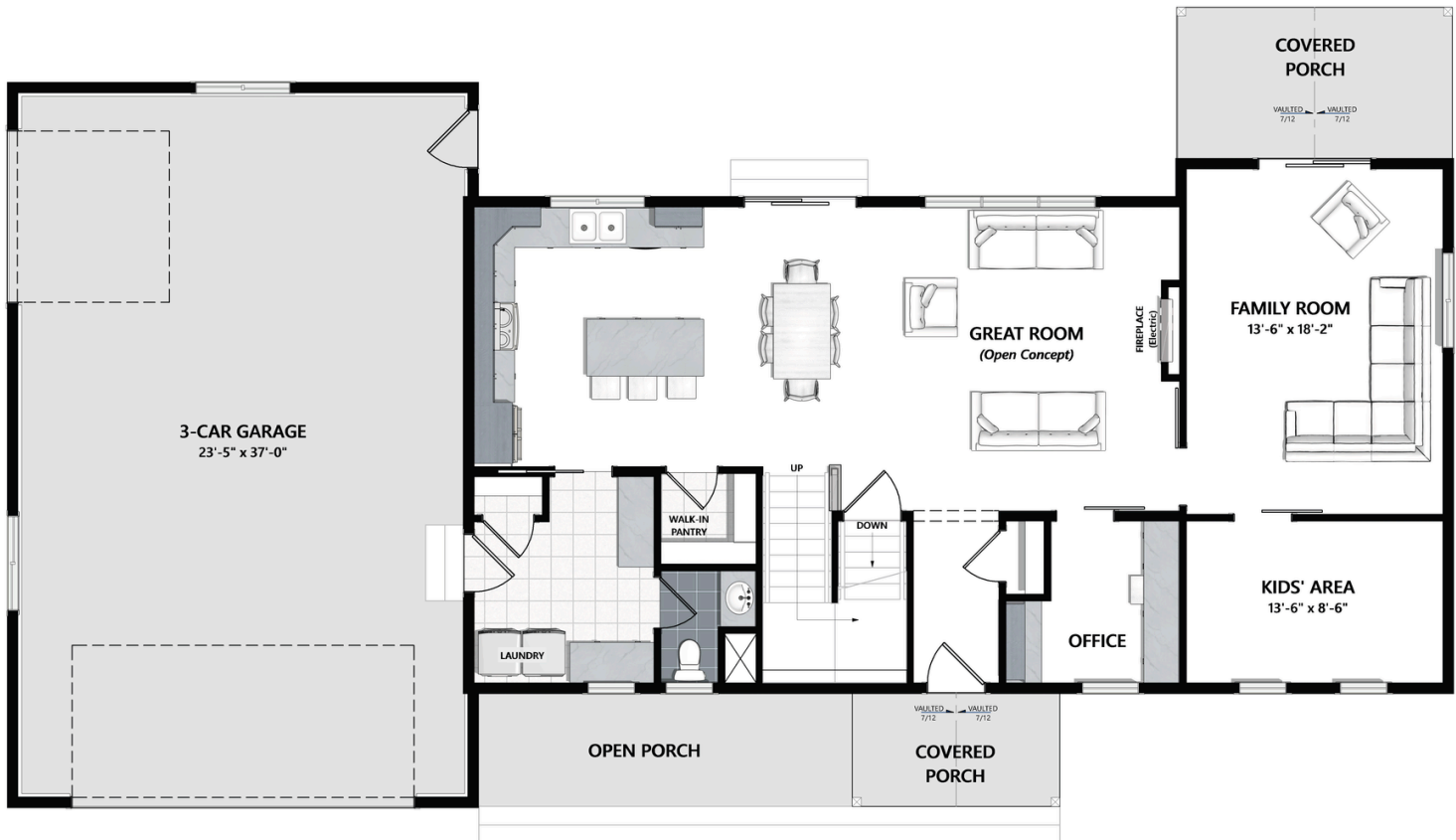
76' x 42'
footprint



MAIN LEVEL

1381 Sq. Ft. of Living Area
918 Sq. Ft. of Garage

- Open Concept Great Room
- Half Bathroom
- Mudroom/Laundry
- Walk-in Pantry
- Family Room
- Home Office
- Flex Room/Kids' Area
- 3-Car Garage



SECOND LEVEL

987 Sq. Ft. of Living Area

- 3 Bedrooms
- 2 Full Bathrooms
- Owner's Suite
- Laundry Room
- Walk-in Closet
- Design Options Available

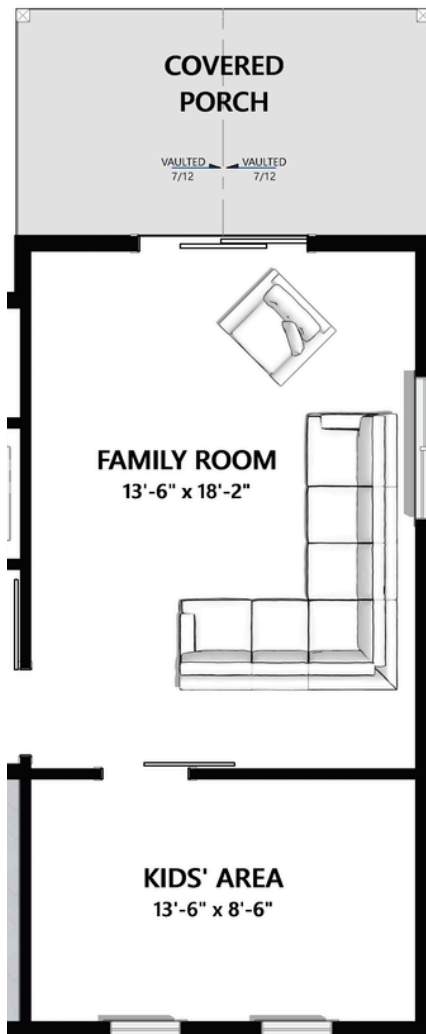


DESIGN OPTION: MAIN LEVEL BEDROOM SUITE

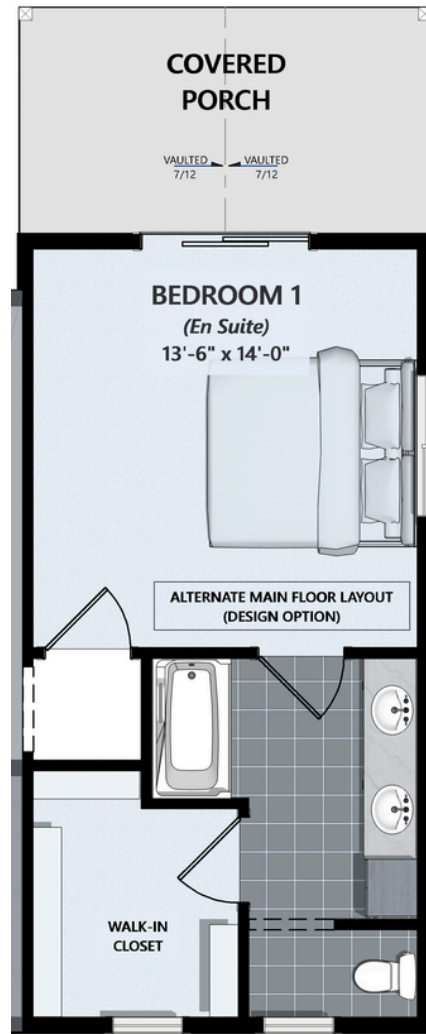
OPTIONAL LAYOUT CHANGE - NOT INCLUDED IN BASE PLAN

Reconfigures the base plan's family room/kids' area into a main level bedroom suite within the same building footprint.

BASE PLAN



DESIGN OPTION

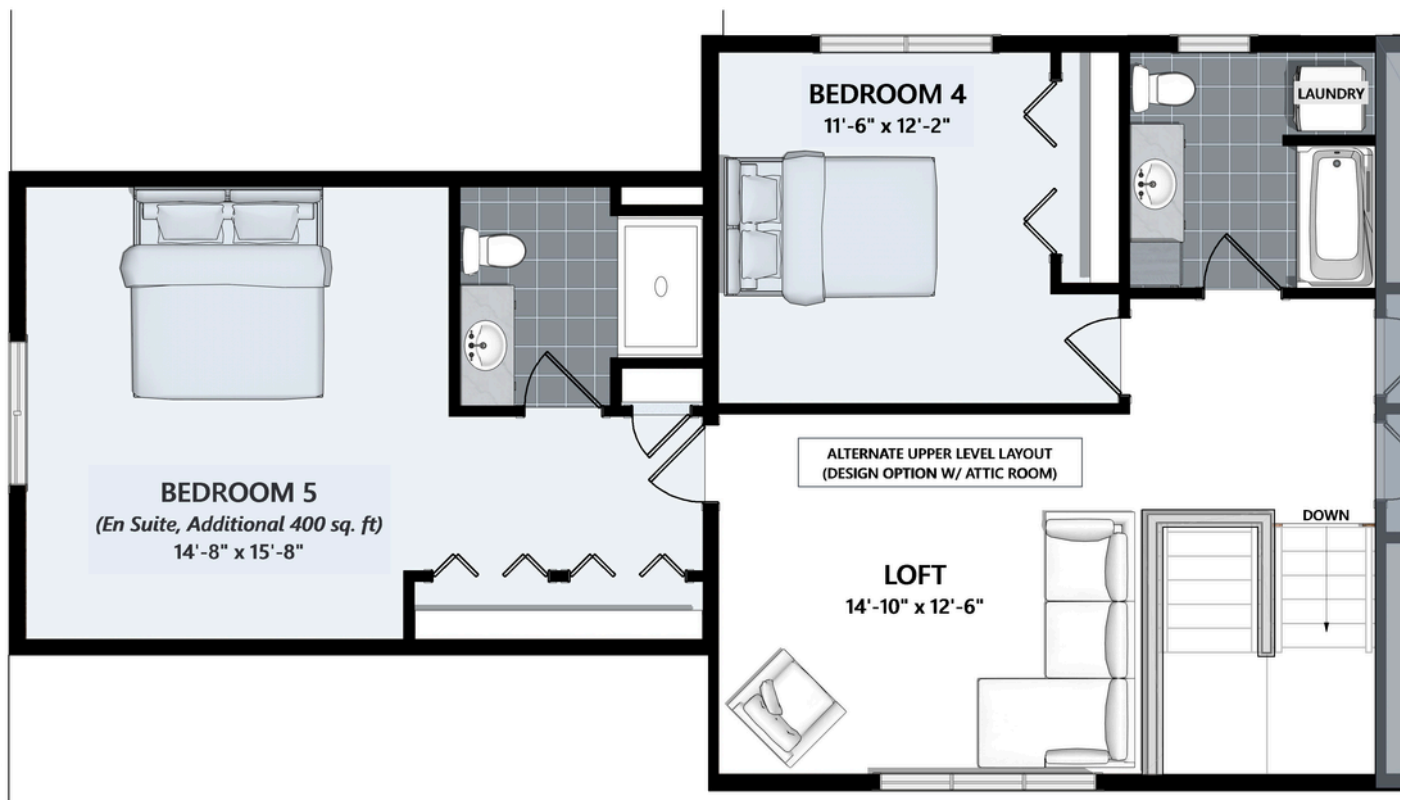


DESIGN OPTION - SECOND LEVEL OPEN LOFT + BONUS ATTIC ROOM

OPTIONAL LAYOUT CHANGE - NOT INCLUDED IN BASE PLAN

Reconfigures the second level to include an open loft space and an additional attic room above the garage.

Adds **400 sq. ft.** to the base plan → **1,392 total sq. ft.** of second-floor living area



ENLARGED PARTIAL SECOND LEVEL VIEW



GREAT ROOM



FAMILY ROOM

EXTERIOR RENDERINGS

BASE FLOOR PLAN WITH STANDARD FINISHES



Renderings above are shown with standard exterior finishes.

Marketing images may include optional design upgrades or alternate finish selections. Refer to the Wausau Homes Homeowner Selection Guide for available exterior materials and colors.